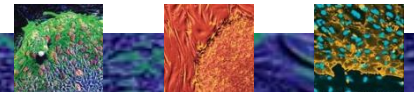




Finance Report

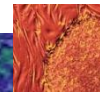
FINANCIAL HIGHLIGHTS

- Grant disbursements as of December
 - 13/14 FY: \$102.4M
 - 12/13 FY: \$79.0M
- Available cash as of December 31, 2013
 - \$65.2M

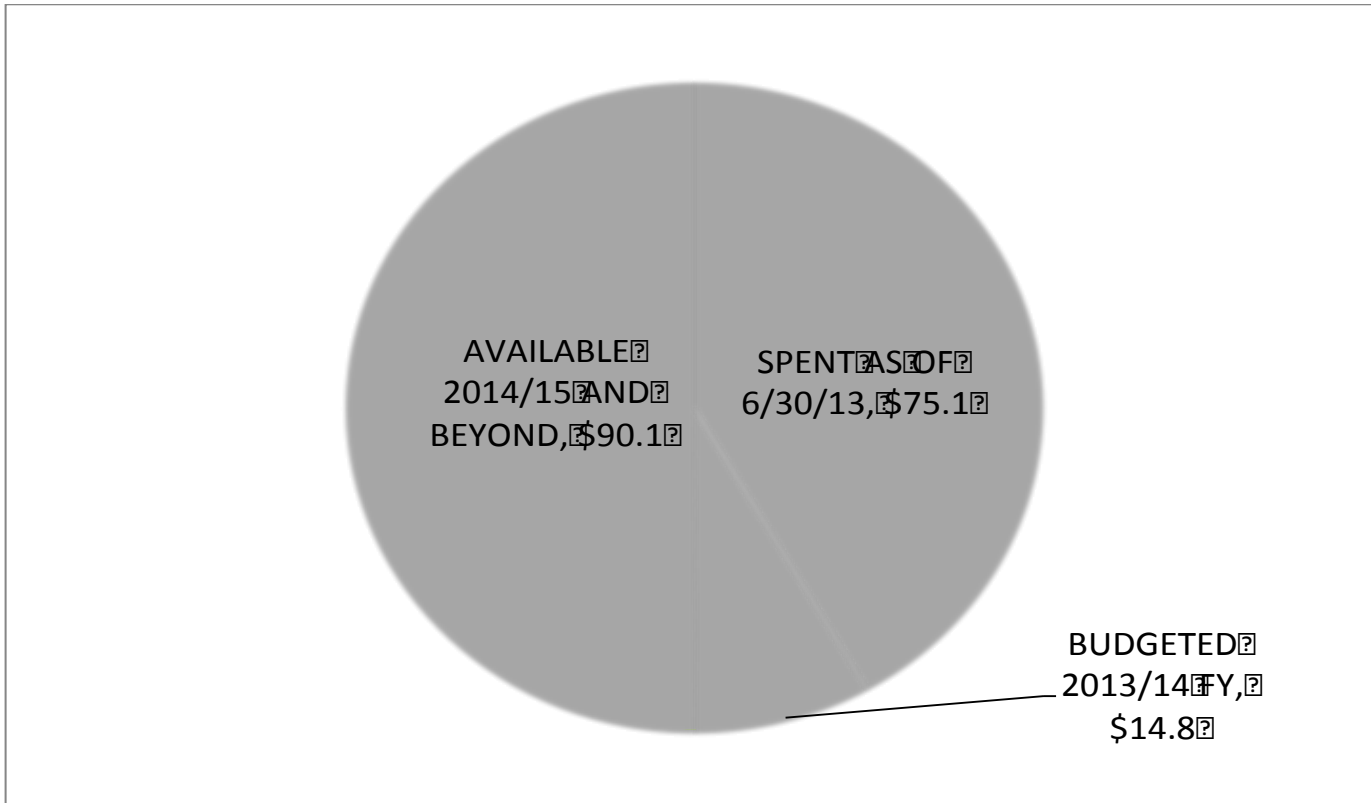


OPERATING EXPENSE DETAIL

<i>Dollars in 000</i>	Jul 2013 - Dec 2013	Jul 2012 - Dec 2012	Variance
Employee Expenses	5,633	5,018	12%
External Services	409	789	-48%
Reviews, Meetings, Workshops	543	571	-5%
Memberships/Training	37	33	11%
Travel	145	106	37%
Equip/Supplies/Telecom/Software	125	74	69%
TOTAL	6,891	6,591	5%



ADMIN EXPENSES – 6% CAP



\$ IN MILLIONS

